

Products > Jewel Bearings > Ring Jewel Assemblies > RS-160-CEO

# Ring Jewel Assemblies - RS-160-CEO

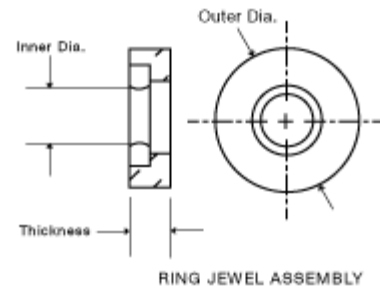
## Specifications

<b>Model</b>	RS-160-CEO
<b>Inside Diameter</b>	.0124/.0126"
<b>Outside Diameter</b>	.1257/.1260"
<b>Length</b>	.059/.061"
<b>Material</b>	Brass

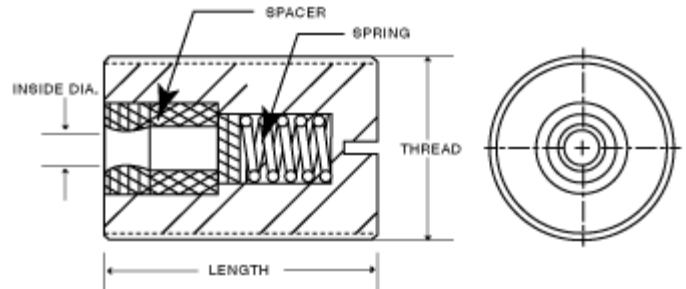


### Description

Ring Jewels can be mounted into bushings or screws. This style can ease your mounting of the bearing into your final instrument. A ring jewel can be mounted into a plain bushing or into a screw to be coupled with an endstone. To assist with fine tuning assembly for load applications Ring Jewel Assemblies can also be mounted with or without a spring. Applications include Flow Meters, Gauges, Meters, Indicators, Aircraft Instruments, Gyros and Watches **Model Code:** B=Bombe, C=Cup, O=Olive, E=Endstone



RING JEWEL ASSEMBLY



SPRING-LOADED ASSEMBLY

### NOT SEEING EXACTLY WHAT YOU NEED?

We specialize in creating a wide range of custom optical components and custom mechanical components including a variety of shapes - from internal holes and tapers to outer flanges, angles and surface finishes. Contact us and we will consult with you to create a custom component that meets all of your specifications.